

Welcome to the first edition of Harvest Snippets for the 2026 harvest season. This report outlines the results of FAR trials which have been harvested in recent days, along with associated weather data for the growing season.

Harvest Snippets Summary

Harvest Snippet 1, 2026 includes results and associated weather data for the following trial:

1. 2025-26 Autumn barley cultivar performance trial, South-Canterbury (Dryland)

1. 2025-26 Autumn sown barley cultivar performance trial

Location: St Andrews, South-Canterbury - Dryland

This trial was sown on 16 May 2025 (ex. wheat) resulting in average established plant counts of 168 plants/m². The trial was harvested on 13 January 2026. Average yields at 10.6 t/ha were lower than the 2022-2025 4-year mean of 11.9 t/ha and last season's yield of 12.6 t/ha.

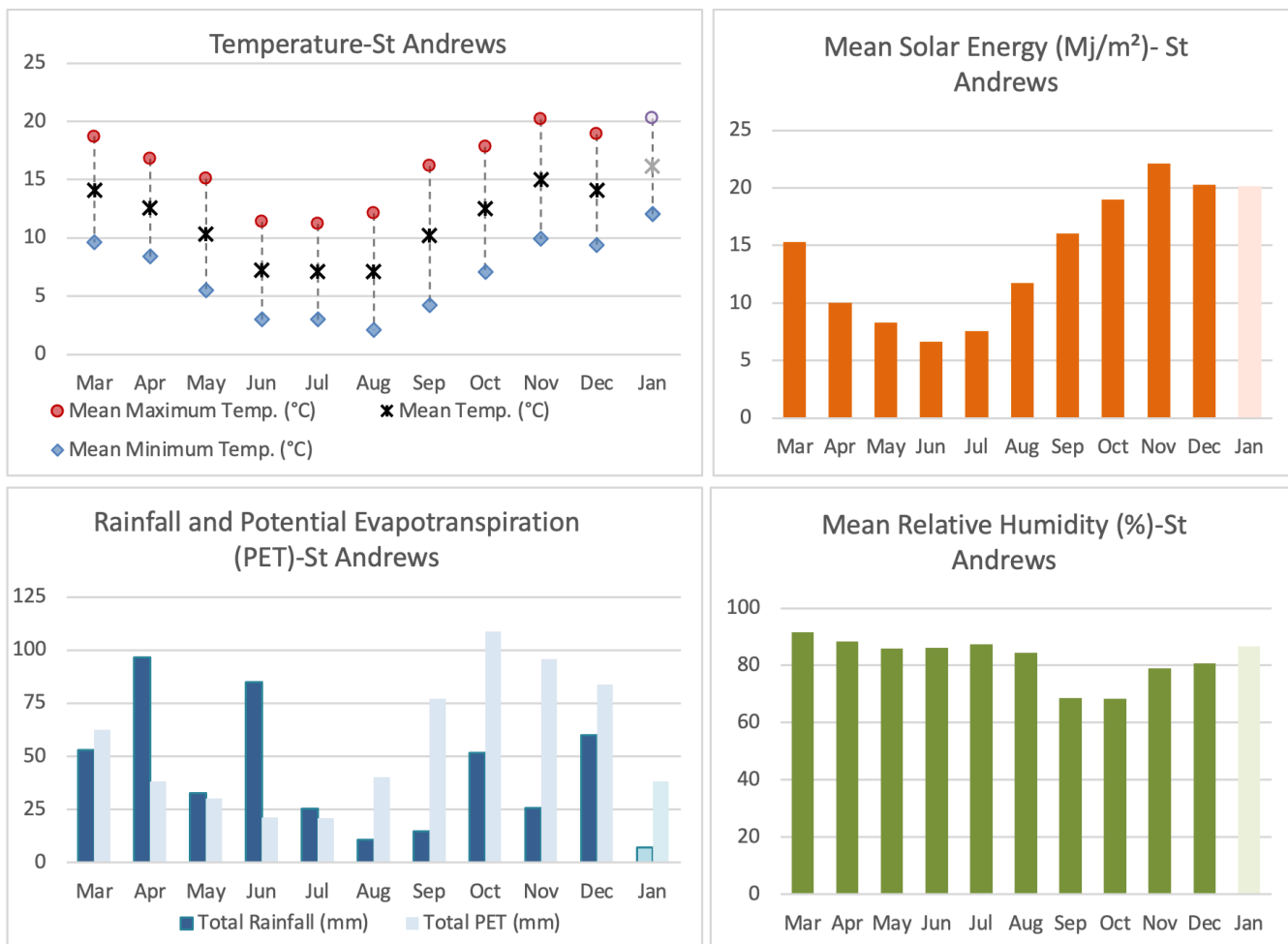
Table 1. Preliminary grain yields for the 2026 harvest for 11 barley cultivars grown under dryland conditions at St Andrews, South-Canterbury compared with the 4-year mean yields harvested from trials at the site between 2022 and 2025.

Cultivar	2026 harvest			2022 to 2025 harvests	
	Plants /m ²	Yield (t/ha)	% of site mean	4-year mean Yield (t/ha)*	% of site 4-year mean*
SY Transformer	168	11.7	111	12.1	101
Baxter	170	11.3	107	12.4	104
SY Silhouette	168	11.0	104	11.7	98
CRBA180	167	11.0	104	11.9	100
SY Dolomite	170	10.8	102	12.3	103
SY418-336	169	10.8	102	12.2	103
Laureate	161	10.7	102	11.8	99
SY418-250	160	10.2	97	11.9	100
Buttress	177	9.7	92	11.6	98
KSB2210	175	9.5	90	–	–
RGT Planet	168	9.3	88	11.2	94
Site mean yield (t/ha)	168	10.6	100.0	11.9	100
P value	0.5	<0.001			<0.001
LSD (p=0.05)		0.8	7.8	0.6	4.7
CV (%)		5.4			

*No trial results from Balfour in 2023-2024, hence this is a three year mean.

Note: – indicates a new entry at this location. Yellow indicates the cultivar was amongst the greatest yielding group of cultivars. Updated 4-year means including the 2026 harvest will be published in the upcoming CPT Booklets. Target plant population for trial: 175 plants/ha.

Figure 1. 2025-26 seasonal weather data from the weather station at St Andrews, South Canterbury.
Source: MetWatch –January data are incomplete.



Relative Humidity data have been calculated by averaging the hourly 8:00 to 9:00 and 9:00 to 10:00 AM data.